



SwitchView: KVM Switching Solutions From Your Desktop

SwitchView

Product Series



The SwitchView® series is the favorite of users who need to control multiple computers from a single set of peripherals. Whether in the office or the home, SwitchView saves space and provides efficient, economical switching for the multi-system user. This feature-rich product line offers on-screen display with the OSD model, desktop and monitor stand flexibility with the DT model, enhanced secure switching with the SC model and true multi-platform support with the desktop MP model.

KVM Switching Solutions From Your Desktop

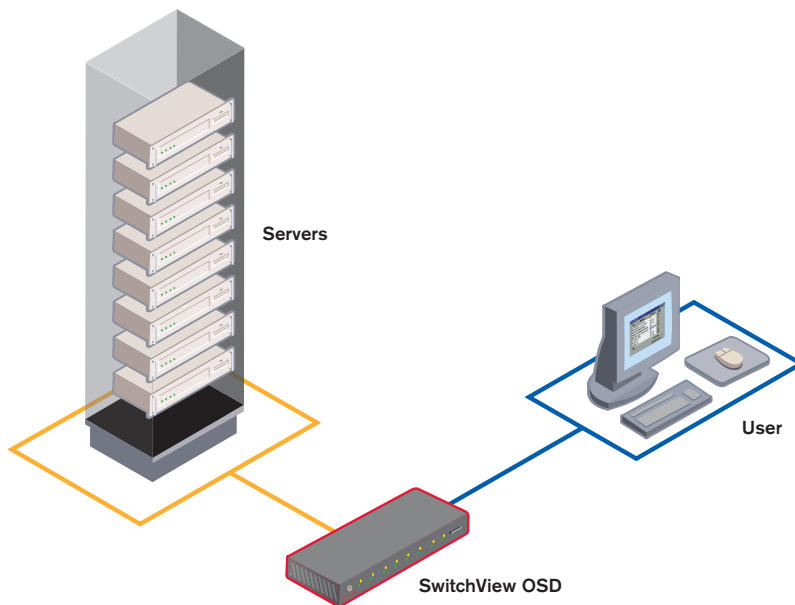
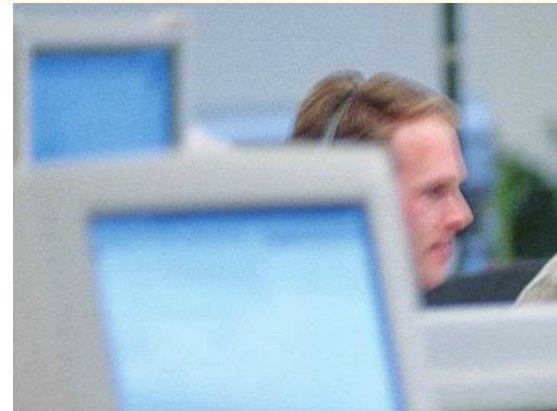
The SwitchView 2-port/4-port model's small footprint combined with quick and easy installation makes this switch the ideal solution for single user, multi-PC applications. Premium color-coded cables make installation a snap with the SwitchView.

The multi-platform SwitchView MP supports combinations of PC, Sun and USB computers using a single keyboard, mouse, and monitor and it eliminates the need for add on adapters or converters. The SwitchView DT is a superior choice in the single user console switch market. This 4-port console KVM solution doubles as a monitor stand and supports up to 100 lbs with zero footprint on the desktop.

The secure, compact SwitchView SC solution is specifically designed to make data transfer between connected computers virtually impossible -- an important factor for maximum security installations. The OSD model extends the SwitchView line with on-screen display and multi-level security. The SwitchView OSD is a powerful tool for small businesses with multi-server control.

Highlights

Features	Benefits
Easy Installation	Color-coded connectors and tangle-proof cables provide ease of installation
Desktop and Laptop PC Control	Controls desktop and laptop PCs alike with one set of peripherals
Hot Pluggable	Add/remove servers without powering down
Compact Design	Saves valuable space on the desktop



The diagram to the left illustrates how the SwitchView OSD supports up to 8 attached PCs. Users can access the PCs from the SwitchView OSD front panel on-screen menu or through a short keyboard sequence.

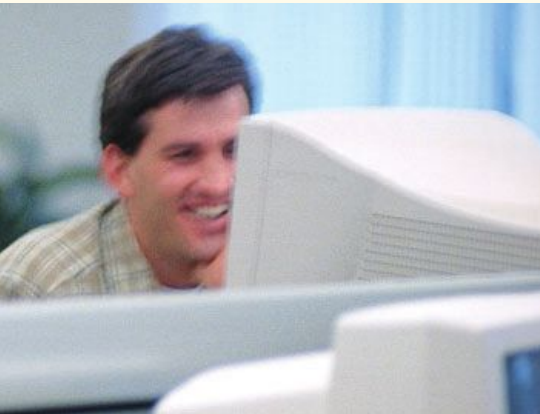
SwitchView

SwitchView DT

SwitchView MP

SwitchView SC

SwitchView OSD



Specifications

SwitchView, SwitchView DT, SwitchView MP, SwitchView OSD, SwitchView SC

MECHANICAL	Height	Width	Depth	Weight
SwitchView, SwitchView MP	1.9" (4.83 cm)	8.1" (20.6 cm)	5" (12.7 cm)	0.9 lbs (0.4 kg)
SwitchView OSD	1.7" (4.5 cm)	17.2" (43.7 cm)	6.5" (16.51 cm)	4.2 lbs (1.91 kg)
SwitchView DT	1.9" (4.83 cm)	11" (27.94 cm)	11" (27.94 cm)	4.2 lbs (1.9 kg)
SwitchView SC	2.7" (6.86 cm)	8.1" (20.6 cm)	5" (12.7 cm)	1.1 lbs (0.5 kg)

ENVIRONMENTAL / POWER / HARDWARE

Operating Temperature	41° (5°C) to 104° (40°C)
Storage Temperature	-4° (-20°C) to 122° (50°C)
Power Requirements	SwitchView, SwitchView DT, SwitchView SC: 6 VDC @ 700 mA (opt.) SwitchView MP: 100-240 VAC, 50-60 Hz (external power) SwitchView OSD: 100-240 VAC, 50-60 Hz (internal power)
Supported Hardware - Computer	SwitchView, SwitchView DT, SwitchView SC: IBM PC/AT, PS/2 and 100% compatibles SwitchView MP: IBM PC/AT, PS/2 and 100% compatibles, Sun, USB
Supported Hardware - Video Modes	SwitchView SC: VGA and SVGA maximum 1600 x 1200 @ 75 Hz res. SwitchView OSD: VGA and SVGA maximum 1600 x 1200 @ 85 Hz res. SwitchView, SwitchView DT: VGA and SVGA maximum 1600 x 1200 @ 85 Hz res. SwitchView MP: VGA, Sun and Sun 13W3 maximum 1600 x 1200 @ 85 Hz res.
Supported Hardware - Peripherals	SwitchView, SwitchView DT: Logitech MouseMan Wheel, Logitech TrackMan Marble Wheel, Logitech TrackMan Marble FX, Microsoft Explorer Mouse, Microsoft IntelliMouse family SwitchView MP: PS/2 keyboard with PS/2 mouse, PS/2 keyboard with serial (9 pin) mouse, Sun keyboard and Sun mouse, USB keyboard and mouse, Microsoft Explorer mouse, Microsoft IntelliMouse Family, IBM Scrollpoint, Logitech Mouseman Wheel, Logitech Trackman Marble wheel, Logitech Marble FX and Kensington 4 button mouse, Sun Type 5 and Type 6 SwitchView SC, SwitchView OSD: PS/2 keyboard, PS/2 mouse, Microsoft IntelliMouse (PS/2 only)
Warranty	Two Year

Ordering Information

SWITCH

SwitchView

12025	Single user, 2-port w/ (2) CPS2-6A cables
12045	Single user, 4-port w/ (2) CPS2-6A cables
10025	Single user, 2-port w/o cables
10045	Single user, 4-port w/o cables

SwitchView MP

14085-AM	Single user, 4-port
----------	---------------------

SwitchView DT

14045	Single user, 4-port
-------	---------------------

SwitchView SC

10040-SC	Single user, 4-port
----------	---------------------

SwitchView OSD

10085-AM	Single user, 8-port
----------	---------------------

CABLES

SwitchView, SwitchView DT, SwitchView SC

CPS2	6 feet
------	--------

SwitchView OSD

CPS2	6 feet
CIS	8, 15 feet

SwitchView MP

CUFC	6 feet VGA, PS/2 kybd, AT kybd, PS/2 mouse and serial mouse
CIFCA	4, 8, 15, 30 feet VGA, PS/2 kybd, PS/2 mouse
CUSB	4, 8, 12 feet VGA, USB kybd & mouse
CWSN	4, 8, 15, 30 feet 13W3, Sun kybd & mouse
CVSN	4, 8, 15, 30 feet VGA, Sun kybd & mouse

SwitchView

Controls desktop and laptop PCs alike with one set of peripherals



SwitchView DT

Doubles as a monitor stand with zero footprint on the desktop



SwitchView MP

True multi-platform support for PC, Sun or USB



SwitchView OSD

Intuitive on-screen display



SwitchView SC

Supports secure data transfer for up to 4 servers



Products at a Glance

	Users	Ports	Platforms	Key Features
SwitchView	Single	2 & 4	PC	Color-coded connectors and cables <i>Easy installation</i>
SwitchView DT	Single	4	PC	Doubles as a monitor stand <i>Zero footprint on the desktop</i>
SwitchView MP	Single	4	PC, USB & Sun	True multi-platform support <i>No clumsy adapters or converters</i>
SwitchView OSD	Single	8	PC	Convenient pop-up menus <i>Easily assign and locate server addresses</i>
SwitchView SC	Single	4	PC	Secure switching for up to 4 servers <i>Supports secure data transfer</i>

About KVM

KVM stands for keyboard, video and mouse. KVM switching systems provide access and control of multiple racks of servers from a single console, as well as control from remote locations. These switches eliminate extra keyboards, monitors and mice and allow businesses to save critical space in their data centers. KVM solutions also provide extended cabling distances and console signal conversion.

About Avocent

Avocent is the leading worldwide supplier of KVM switching and connectivity solutions that provide IT managers with access and control of multiple servers and network data center devices. Avocent was formed in July 2000 by the merger of leading industry innovators Cybex Computer Products Corporation and Apex Inc. Avocent's KVM solutions are distributed by the world's largest server manufacturers and installed in Fortune 100 companies around the world.

Headquartered in Huntsville, Alabama, Avocent has locations in Redmond, Washington; Sunrise, Florida; Chelmsford, Massachusetts; Austin, Texas; Shannon, Ireland; London, England; Steinhagen, Germany; Tokyo, Japan; China and Singapore. For more information about Avocent and its products, visit the Company's website at www.avocent.com.



Avocent's Product Portfolio

Avocent's broad product portfolio includes data center solutions such as: AMX, AutoView, CPS, DS1800, DSR, LongView, OutLook, SPC, SwitchView and XP. Learn more about Avocent's full range of switching, extension, power management and remote IP solutions at www.avocent.com.